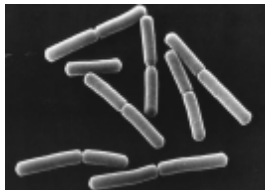


AquaPro B

Designed to enhance the water quality of aquatic systems



The bacteria in AquaPro B are strains of *Bacillus subtilis* and *Bacillus licheniformis* selected for their ability to produce a wide range of enzymes that allow them to digest organic matter and break down ammonia. They are in a stable form, spores, that resist heat and can be stored for very long periods. They can be used following time-honored methodologies and activating them before use, or in our convenient biodegradable bags (AquaPro EZ), in and on the feed (AquaPro F) or in a tableted form (PRO4000X).

A Powerful Tool for Bioremediation



- Technology in use for decades
- Alleviates odors
- Controls Blue Green Algae*
- Controls undesirable vibrio and other bacteria species in shrimp and fishponds
- Digests organic matter (sludge reduction)
- Controls ammonia build up
- Improves water quality
- Reduces environmental stresses on shrimp and fish in production environments

Application: There is no one right way to use microbial products. Each aquatic ecosystem that is being treated is different; there are different types of bacteria, algae, protozoa, metazoans, sediment types, wild and farmed animals, etc. present in farms. Products that claim to be able to be used in a cookbook manner fail to take this into account. We urge you to use complex carbohydrates such as soybean meal or some other inexpensive carbon source near the time that you apply our products. These added nutrients help the bacteria in our product to grow and allow them to efficiently clean up the accumulated organic matter and compete with less desirable bacteria and algae for macro and micronutrients.

Directions for use:

For ponds: Add ten pounds to 20 gallons of clean warm water (80-110 F). Mix well, aerate if possible. Allow suspension to sit for 2 to 4 hours. Three kgs (6.6 pounds) is added per ha to ponds during filling. One kg/ha is added weekly thereafter as required.

For hatchery: Reconstitute 50 grams of AquaPro B in a liter of water and add to tanks 2 to 4 hours later. Add 500 mls per 20 MT tank. Repeat daily.

Note: Optimum application rates depend on how much organic matter is present and nutrient limitations. We recommend that you add a carbon source periodically (soybean meal, wheat midds, etc.) and adjust the level of product you use based on results.

* *AquaPro B* is not an algaecide. It's mode of action is to use the nutrients that certain kinds of algae (such as cyanophytes or blue green algae) need and impact growth indirectly. By using nitrogen and phosphorous the bacteria in our product make less available for the growth of other undesirable bacteria and algae.